



orthex™

CATALOGUE

Plantcare 9/2025



Practical is beautiful

www.orthexgroup.com

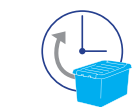
ORTHEX GROUP



Practical is beautiful

Orthex Group is a leading Nordic producer of household products with over 100 years of experience. We are proud to offer a broad assortment of products that are high quality, safe and functional.

Our brands are strong, well-known and actively marketed. Over 90% of all products are manufactured in Sweden and Finland in our own factories.



Long-lasting and recyclable products



NORDIC DESIGN & QUALITY

Local production in Finland and Sweden



Increased usage of recycled and renewable materials



Local sales organisations
Factories
Warehouses

SUSTAINABLE SOLUTIONS

The main building blocks of our approach to sustainability are our long-lasting products, sustainable raw materials, and our target towards carbon neutrality. We are actively increasing the share of recycled and renewable raw materials in our products, and we continuously strive to reduce the carbon footprint of our operations and products. Orthex's high-quality, safe, and durable products are made with care and timeless design. Orthex does not make single-use products. On the contrary, Orthex's products are made for long-term use and are fully recyclable in all our markets at the end of their life cycle.



SHOWING THE WAY IN SUSTAINABILITY

Orthex Group's reputation for sustainability is a vital business asset that depends on the commitment of all our people to act in accordance with our ambitious sustainability strategy. Every day through our actions, each of us is responsible for making our strategy come to life through sound judgement and firm business decisions. We have made a commitment to show the way in sustainability

in our industry and we are actively supporting the UN sustainability goals.

Orthex Group is always committed to conduct business in a sustainable and responsible manner and we are happy to help our partners and consumers to do the same through working with Orthex and by selecting Orthex Group products. Orthex's sustainability report, which

details Orthex's sustainability targets, achievements and efforts, is published annually. You can find it on our web site at www.orthexgroup.com

Alexander Rosenlew
Alexander Rosenlew
CEO



PHOTO COPYRIGHT WWF

orthex™

MAKING EVERYDAY LIFE MORE GREEN

We are proud to present our practical and beautiful Orthex Plant Care range, with all flower pots and balcony boxes made of recycled plastic.

Orthex Group combines classical and modern design with functional features and benefits. Our pots and balcony boxes are made in neutral colours that give center stage to what is grown inside them.

Our assortment builds on four key cornerstones:

- Recycled raw materials
- Functional products
- Classic design with a modern twist
- Manufacturing in the Nordics

Plastic as material is excellent for Plant Care. It's durable, lasts for a long time and it can stay outside all year round. Plastic has an excellent moisture retention capacity; it is light and even big pots are easy to move.

We believe everyone can be a gardener and grow beautiful flowers, herbs and vegetables. All that is required is a bit of effort and practical products that enable plants to thrive even in challenging conditions. With our beautiful pots you can make you home garden thrive!



orthex™

A GREEN HOME IN AN EASY WAY

- Orthex indoor products

A green indoor oasis is easy to achieve. The key success factor is functional plant care products that ensure optimal growth conditions day in and day out.

When it comes to product design, we provide solutions for both modern and more traditional interiors. Everyone can find their own favorites that fit with the rest of the furnishing.



Award-winning Scandinavian design
by acclaimed designers.

Our flower pots and balcony boxes are manufactured in our own factories in Finland and Sweden, using recycled plastic sourced from household and industrial waste.



HOME GARDENING IS FUN & TRENDY

- Orthex all-round products

Growing our own food remains popular, not just in the countryside, but also in city centers. We want to know where our food comes from and what it contains. In our natural looking and stylish pots, it's easy to plant and grow your own vegetables and herbs.

Besides making home gardening easier, Orthex Group is committed to promoting sustainable development and more environmentally friendly products. The raw material for the entire Plant Care range is recycled plastic – plastic waste collected from households and industrial scrap.





CONTENTS

POTS & SAUCERS

Eden	10
Paulina.....	12
Pamela	15
Epoque.....	16
Botanica	18
Cultivate.....	20

WINDOW BOXES

Orthex balcony boxes	14
Brackets	15
Epoque window boxes.....	17
Botanica window boxes.....	19

WATERING

Watering cans	22
Sprayers.....	22
Grave vase	22

BIRD FEEDING

Bird feeders	23
Tallow ball feeder	23

orthex™ EDEN

The Orthex Eden range was created in partnership with professional gardeners. The modern and functional range won the esteemed Red Dot Product Design Award in 2012.

This practical container pot has a self-watering system. Self-watering system gives the plants a steady supply of water and makes them thrive and bloom. The pots are available in a classic white colour.



Eden pot with self-watering 16 cm
16x16x17 cm
53710



Eden pot with self-watering 20 cm
20x20x21 cm
54110



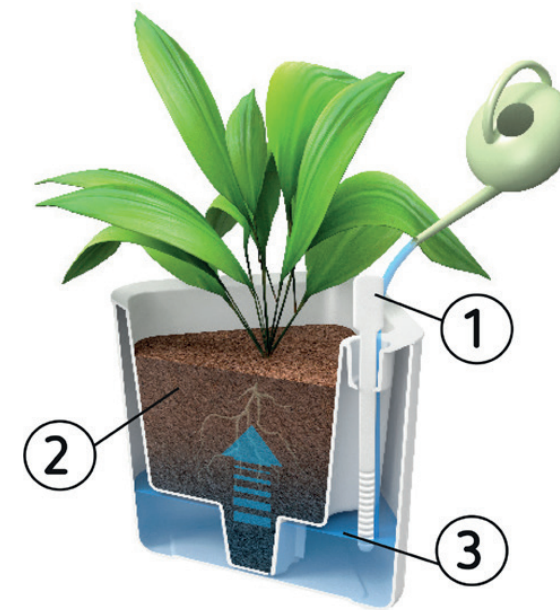
Eden pot with self-watering 24 cm
24x24x25 cm
54310



reddot design award
winner 2012



Made from
recycled
plastic



Self-watering is easy!

1. Easy to water correctly – the measuring stick is like an oil dipstick, indicating when water is needed.
2. The plant absorbs exactly the right amount of water from the container.
3. The spacious water container means less frequent watering.



Pots with a self-watering system make plant care easier.

EDEN HERB POT

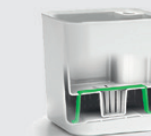
This herbal pot makes your herbs thrive and taste even better. No planting is required – the herb can be placed in its original plastic pot directly in the Eden herbal pot.



Eden herb pot set in gift pack
39x14,5x14,5 cm
698500



Eden herb pot with self-watering 12 cm
12x12x12 cm
53510



Install the hydro felt mat. The mat ensures the herb gets the right amount of water.



Place the herb inside the Eden pot. No planting is required.



Water the herb through the tube.

orthex™

PAULINA

The Orthex Paulina pot is a modern classic with an easy self-watering system. This is the perfect product for your indoor plants, but just as ideal for home gardening at your balcony or terrace.

You can choose the best option for your furnishing from three colours: stylish black, classic white or olive green or you can mix them freely to get a nice and lively look at your home.

Self-watering system in Paulina pots is easy to use, and it gives the plants a steady supply of water making them thrive and bloom. Clear dipstick shows when it is time to refill water - no risk of overwatering.

- Several sizes: 14-40 cm
- All pots have self-watering inserts
- Available in three different colours: black, olive green and white



orthex™

WINDOW BOX

Window boxes with a self-watering system and a generous water reservoir reduce the need for frequent watering.

Punched markings make it easy to make drainage holes, preventing water from collecting at the bottom.



Orthex window box with inset 55 cm
55x18x17 cm
47410 474655
☐ ☒



Orthex window box with inset 75 cm
75x18x17 cm
47310 473655
☐ ☒



BRACKETS

Mount your window boxes safely with our steel brackets. The brackets can be adjusted to the width of the railing and they are available in extra strong material for heavy boxes.



Brackets for window box, max 20 kg
17x23x2 cm
2640090 2640010
☒ ☐



Brackets for window box, max 30 kg
21x28x3 cm
2972090 2972070
☒ ☐

PAMELA

Orthex Pamela pot is a traditional flowerpot which is simple and easy to like. The pot comes with a saucer that protects the surface from moisture. The pots are available in a classic white colour in three different sizes.



Pamela pot with saucer 11,5 cm
12x12x10 cm
46312
☐



Pamela pot with saucer 14 cm
14x14x12 cm
46412
☐



Pamela pot with saucer 17 cm
17x17x13 cm
46512
☐



orthex™

EPOQUE

Our spacious and rustic Epoque pots are perfect for all home gardeners. Their size and design offer plenty of room for roots to grow and make plant care easy.



Epoque pot Ø 24 cm
27x27x21 cm
2809790



Epoque pot Ø 29 cm
32x32x24 cm
2810790



Epoque pot Ø 35 cm
39x39x30 cm
2811790



Epoque pot Ø 44 cm
47x47x37 cm
2812790



Epoque window box with insert 60 cm
60x23x19 cm
2843790

Epoque window box with insert 80 cm
80x23x19 cm
2844790

Epoque window box with insert 100 cm
100x23x19 cm
2845790

orthex™ BOTANICA

Our Botanica range of pots, saucers, and window boxes has a natural look and feel that blends perfectly into your home, terrace, or garden.

The Botanica range offers all the benefits of plastic: easy to move, excellent moisture retention, and durable enough for year-round outdoor use – even in winter.



Botanica pot 30 cm
30x30x22 cm
2911790 2911314 2911312



Botanica pot 40 cm
40x40x29 cm
2913790 2913314 2913312



Botanica pot 45 cm
45x45x32 cm
2914790 2914314 2914312



Botanica pot 60 cm
60x60x44 cm
2916790 2916314 2916312



Botanica saucer 26 cm
26x26x3 cm
2918790 2918314 2918312



Botanica saucer 34 cm
34x34x4 cm
2920790 2920314 2920312



Botanica saucer 38 cm
38x38x5 cm
2921790 2921314 2921312



Botanica saucer 51 cm
51x51x6 cm
2923790 2923314 2923312



Botanica window box 60 cm
59x20x17 cm
2924791 2924790 2924314 2924312



Botanica window box 80 cm
80x20x17 cm
292591 2925790 2925314 2925312



CULTIVATE

Your plants need water, light and nourishment to grow and flourish. As the plants grow they need more room for their roots, and re-potting helps them to thrive and grow big.

With our Cultivate pots and saucers you ensure your plants have optimal growing conditions. The whole range is available in black and grey.

Made from recycled plastic



<div> Cultivate pot 12 cm 12x12x12 cm 2534790 2534015 </div>	<div> Cultivate pot 14 cm 14x14x13 cm 2535790 2535015 </div>	<div> Cultivate pot 16 cm 16x16x14 cm 2536790 2536015 </div>	<div> Cultivate pot 18 cm 18x18x16 cm 2537790 2537015 </div>	<div> Cultivate saucer 12 cm 12x12x2 cm 2524790 2524015 </div>	<div> Cultivate saucer 14 cm 14x14x2 cm 2525790 2525015 </div>	<div> Cultivate saucer 16 cm 16x16x3 cm 2526790 2526015 </div>	<div> Cultivate saucer 18 cm 18x18x3 cm 2527790 2527015 </div>
<div> Cultivate pot 21 cm 21x21x17 cm 2538790 2538015 </div>	<div> Cultivate pot 24 cm 24x24x20 cm 259790 2539015 </div>	<div> Cultivate pot 27 cm 27x27x23 cm 2540790 2540015 </div>	<div> Cultivate pot 30 cm 30x30x26 cm 2541790 2541015 </div>	<div> Cultivate saucer 21 cm 21x21x4 cm 2528790 2528015 </div>	<div> Cultivate saucer 24 cm 24x24x4 cm 2529790 2529015 </div>	<div> Cultivate saucer 28 cm 28x28x5 cm 2530790 2530015 </div>	<div> Cultivate saucer 35 cm 35x35x6 cm 2531790 2531015 </div>

orthex™

WATERING

Watering your plants is easy and fun with Orthex watering cans. Many plants also need to be misted with room-temperature water, especially during the winter. This is easy to do with our sprayers. Both the sprayers and the watering cans are available in beautiful earthy tones – and also in white.



Grave vase
9x8x30 cm
2627040



A grave vase is a sensible choice for the cemetery. This durable vase keeps your flowers beautiful and in their place for a long time.



Chaplin sprayer 0,5 L
11x11x21 cm
2659070 2659112 2659114



Splash watering can 2,5 L
39x12x22 cm
4033111 4033112 4033114



Splash watering can 5 L
46x15x28 cm
4003529



Splash watering can 10 L
63x19x35 cm
4010529

A spout is included with Splash 5 and 10 L. They also have clear volume markings on the outside.



Splash spout for watering 5 L
9x8x5 cm
4001090



Splash spout for watering 10 L
12x11x6 cm
4002090

BIRD FEEDERS



Birdie tallow ball feeder
20x20x28 cm
9322030 9322790



Kåtan birdfeeder 2 L
27x27x24 cm
9325440 9325790

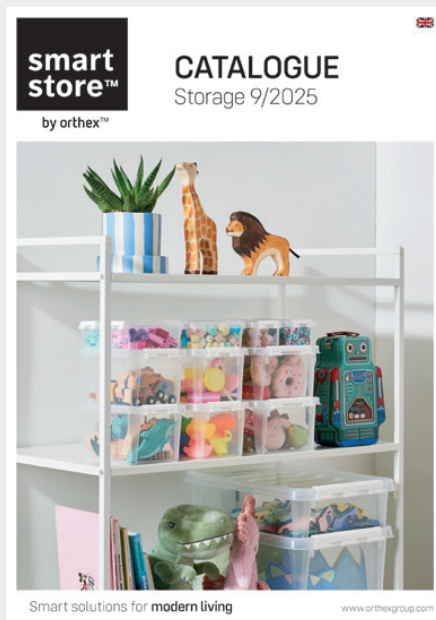


Birdie birdfeeder 4 L
29x29x24 cm
9323030 9323790



Kåtan birdfeeder can hang from a hook in a tree or be mounted on a stick. Transparent top makes it easy to see when it's time to refill the bird food.

ALSO CHECK OUT OUR OTHER CATALOGUES.



Orthex at your service

Orthex Group is the leading Nordic designer, manufacturer and marketer of household products. We have a mission to make everyday life a little easier and more enjoyable. Our well-known brands are Orthex™, SmartStore™ and GastroMax™

www.orthexgroup.com



www.facebook.com/orthexgroup



[@orthexgroup](https://www.instagram.com/orthexgroup)



www.pinterest.com/orthexgroup



www.youtube.com/orthexgroup

Practical is beautiful

Oy Orthex Finland Ab

Suomalaistentie 7,
02270 Espoo, Finland
Tel. +358 (0)19 329 61

Orthex Sweden AB

Box 6, SE-362 21,
Tingsryd, Sweden
Tel. +46 (0)477 450 00

Orthex Norway AS

Østre Aker vei 19,
NO-0581 Oslo, Norway
Tel. +47 23 17 04 00

Orthex Denmark A/S

Amager Strandvej 60-64,
DK 2300 Copenhagen, Denmark
Tel. +45 46 38 09 10

Orthex Germany GmbH

Hofkamp 100, 42103
Wuppertal, Germany
Tel. +49 (0) 202 527 07 380

UK & Ireland

Tel : +44 (0) 7920 236548
craig.sammells@orthexgroup.com

France

Tel. +33 (0)6 22 97 51 25
aurelien.chabannier@orthexgroup.com

Benelux

Tel. +31 (0) 613691607
bart.zonneveld@orthexgroup.com

orthex
GROUP